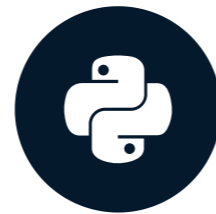


# Introduction

DIMENSIONALITY REDUCTION IN PYTHON



**Jeroen Boeye**

Head of Machine Learning, Faktion

# Tidy data

Name	Type	HP	Attack	Defense	Speed	Generation
Bulbasaur	Grass	45	49	49	45	1
Ivysaur	Grass	60	62	63	60	1
Venusaur	Grass	80	82	83	80	1
Charmander	Fire	39	52	43	65	1
Charmeleon	Fire	58	64	58	80	1

# Tidy data

Name	Type	HP	Attack	Defense	Speed	Generation
Bulbasaur	Grass	45	49	49	45	1
Ivysaur	Grass	60	62	63	60	1
Venusaur	Grass	80	82	83	80	1
Charmander	Fire	39	52	43	65	1
Charmeleon	Fire	58	64	58	80	1

# Tidy data

Name	Type	HP	Attack	Defense	Speed	Generation
Bulbasaur	Grass	45	49	49	45	1
Ivysaur	Grass	60	62	63	60	1
Venusaur	Grass	80	82	83	80	1
Charmander	Fire	39	52	43	65	1
Charmeleon	Fire	58	64	58	80	1

# Tidy data

Name	Type	HP	Attack	Defense	Speed	Generation
Bulbasaur	Grass	45	49	49	45	1
Ivysaur	Grass	60	62	63	60	1
Venusaur	Grass	80	82	83	80	1
Charmander	Fire	39	52	43	65	1
Charmeleon	Fire	58	64	58	80	1

# The shape attribute

Name	Type	HP	Attack	Defense	Speed	Generation
Bulbasaur	Grass	45	49	49	45	1
Ivysaur	Grass	60	62	63	60	1
Venusaur	Grass	80	82	83	80	1
Charmander	Fire	39	52	43	65	1
Charmeleon	Fire	58	64	58	80	1

```
pokemon_df.shape
```

```
(5, 7)
```

# When to use dimensionality reduction?

Name	Type	HP	Attack	Defense	Speed	Generation
Bulbasaur	Grass	45	49	49	45	1
Ivysaur	Grass	60	62	63	60	1
Venusaur	Grass	80	82	83	80	1
Charmander	Fire	39	52	43	65	1
Charmeleon	Fire	58	64	58	80	1

# When to use dimensionality reduction?

Name	Type	HP	Attack	Defense	Speed	Generation
Bulbasaur	Grass	45	49	49	45	1
Ivysaur	Grass	60	62	63	60	1
Venusaur	Grass	80	82	83	80	1
Charmander	Fire	39	52	43	65	1
Charmeleon	Fire	58	64	58	80	1



# The describe method

```
pokemon_df.describe()
```

	HP	Attack	Defense	Speed	Generation
<b>count</b>	5.0	5.0	5.0	5.0	5.0
<b>mean</b>	56.4	61.8	59.2	66.0	1.0
<b>std</b>	15.9	13.0	15.4	14.7	0.0
<b>min</b>	39.0	49.0	43.0	45.0	1.0
<b>25%</b>	45.0	52.0	49.0	60.0	1.0
<b>50%</b>	58.0	62.0	58.0	65.0	1.0
<b>75%</b>	60.0	64.0	63.0	80.0	1.0
<b>max</b>	80.0	82.0	83.0	80.0	1.0

# The describe method

```
pokemon_df.describe()
```

	HP	Attack	Defense	Speed	Generation
<b>count</b>	5.0	5.0	5.0	5.0	5.0
<b>mean</b>	56.4	61.8	59.2	66.0	1.0
<b>std</b>	15.9	13.0	15.4	14.7	0.0
<b>min</b>	39.0	49.0	43.0	45.0	1.0
<b>25%</b>	45.0	52.0	49.0	60.0	1.0
<b>50%</b>	58.0	62.0	58.0	65.0	1.0
<b>75%</b>	60.0	64.0	63.0	80.0	1.0
<b>max</b>	80.0	82.0	83.0	80.0	1.0

# The describe method

```
pokemon_df.describe(exclude='number')
```

	Name	Type
<b>count</b>	5	5
<b>unique</b>	5	2
<b>top</b>	Charmander	Grass
<b>freq</b>	1	3

# The describe method

```
pokemon_df.describe(exclude='number')
```

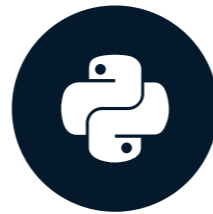
	Name	Type
<b>count</b>	5	5
<b>unique</b>	5	2
<b>top</b>	Charmander	Grass
<b>freq</b>	1	3

# Let's practice!

DIMENSIONALITY REDUCTION IN PYTHON

# Feature selection vs. feature extraction

DIMENSIONALITY REDUCTION IN PYTHON



**Jeroen Boeye**

Head of Machine Learning, Faktion

# Why reduce dimensionality?

## Your dataset will:

- be less complex
- require less disk space
- require less computation time
- have lower chance of model overfitting

# Feature selection

income	age	favorite color
10000	18	Black
50000	47	Blue
20000	40	Blue
30000	29	Green
20000	22	Purple



# Feature selection

income	age	favorite color
10000	18	Black
50000	47	Blue
20000	40	Blue
30000	29	Green
20000	22	Purple

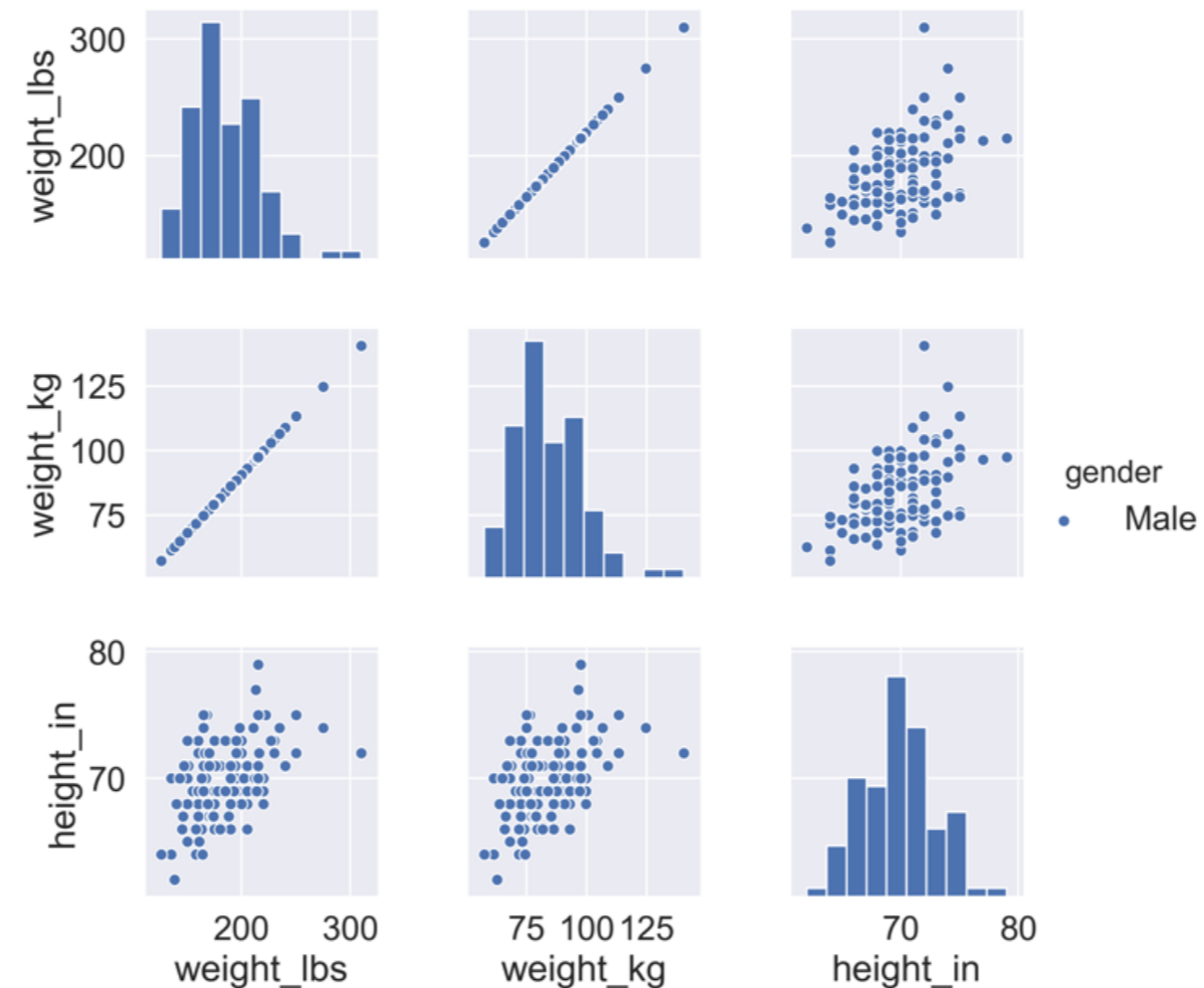


income	age
10000	18
50000	47
20000	40
30000	29
20000	22

```
insurance_df.drop('favorite color', axis=1)
```

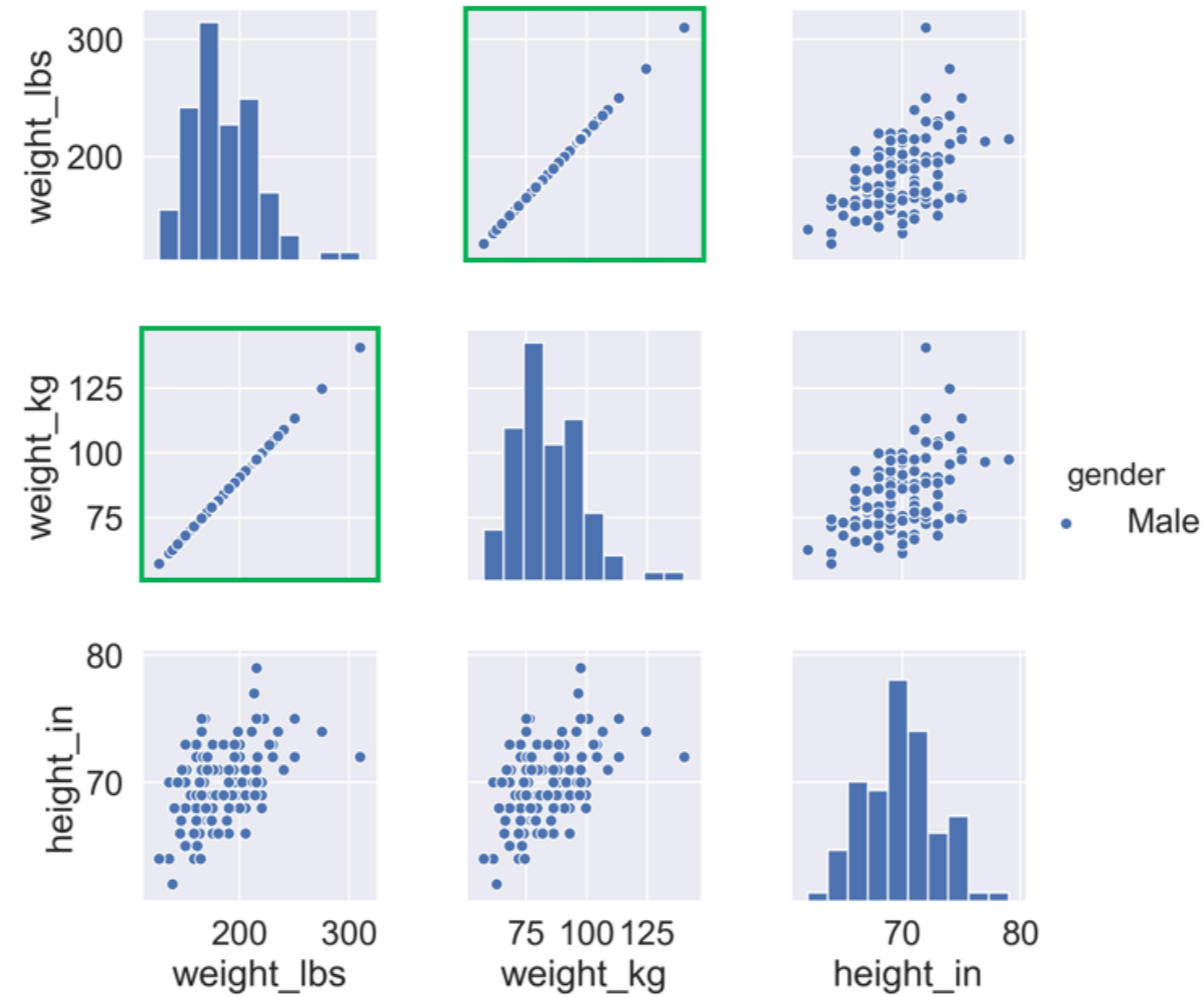
# Building a pairplot on ANSUR data

```
sns.pairplot(ansur_df, hue="gender", diag_kind='hist')
```



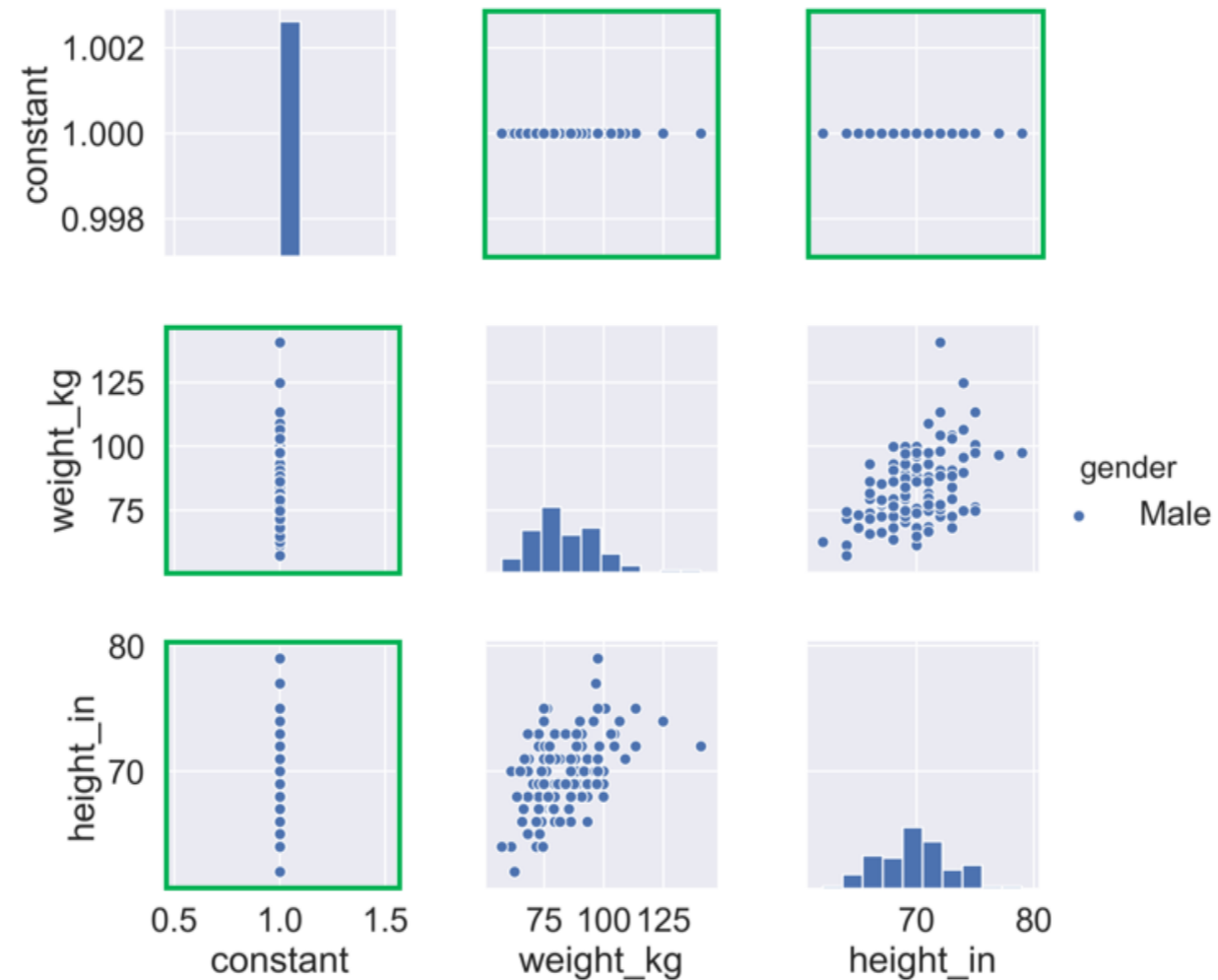
# Building a pairplot on ANSUR data

```
sns.pairplot(ansur_df, hue="gender", diag_kind='hist')
```



# Building a pairplot on ANSUR data

```
sns.pairplot(ansur_df, hue="gender", diag_kind='hist')
```



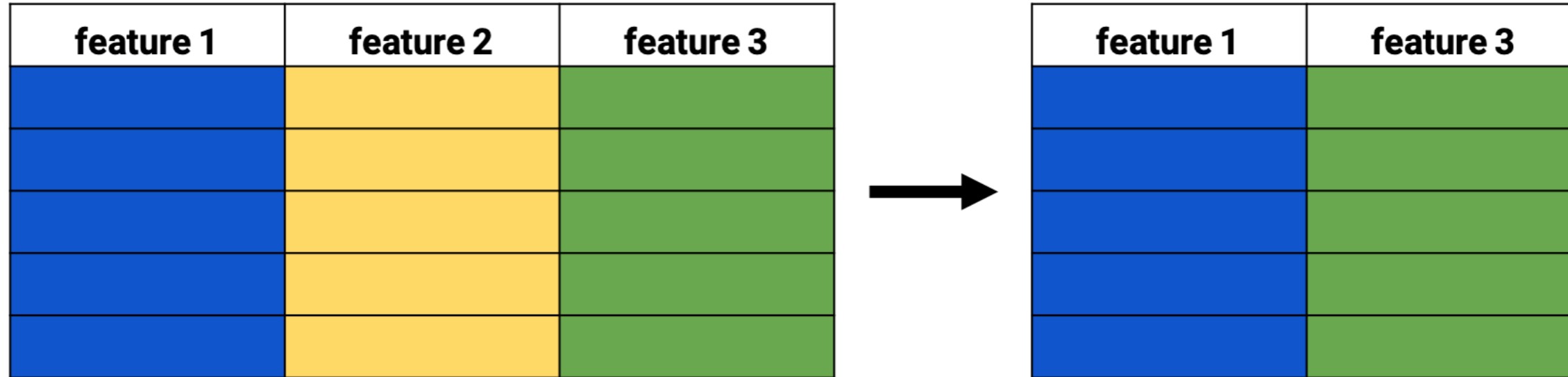
# Feature selection

feature 1	feature 2	feature 3

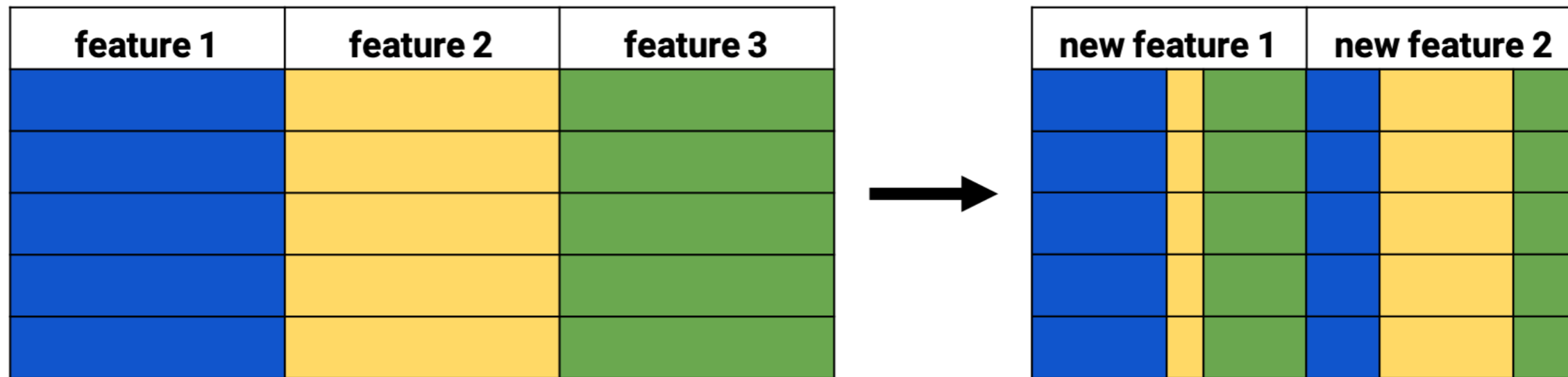


feature 1	feature 3

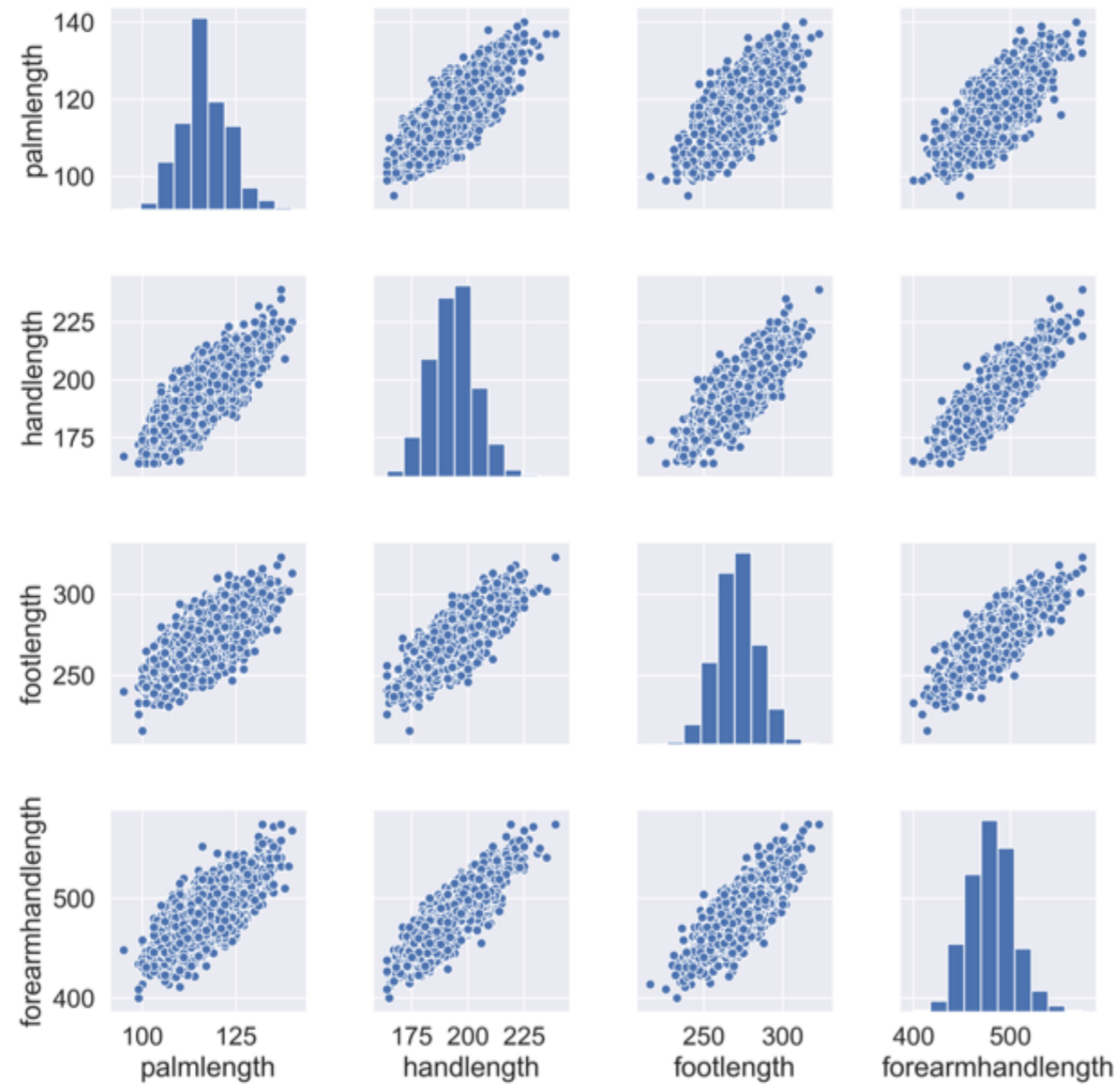
# Feature selection



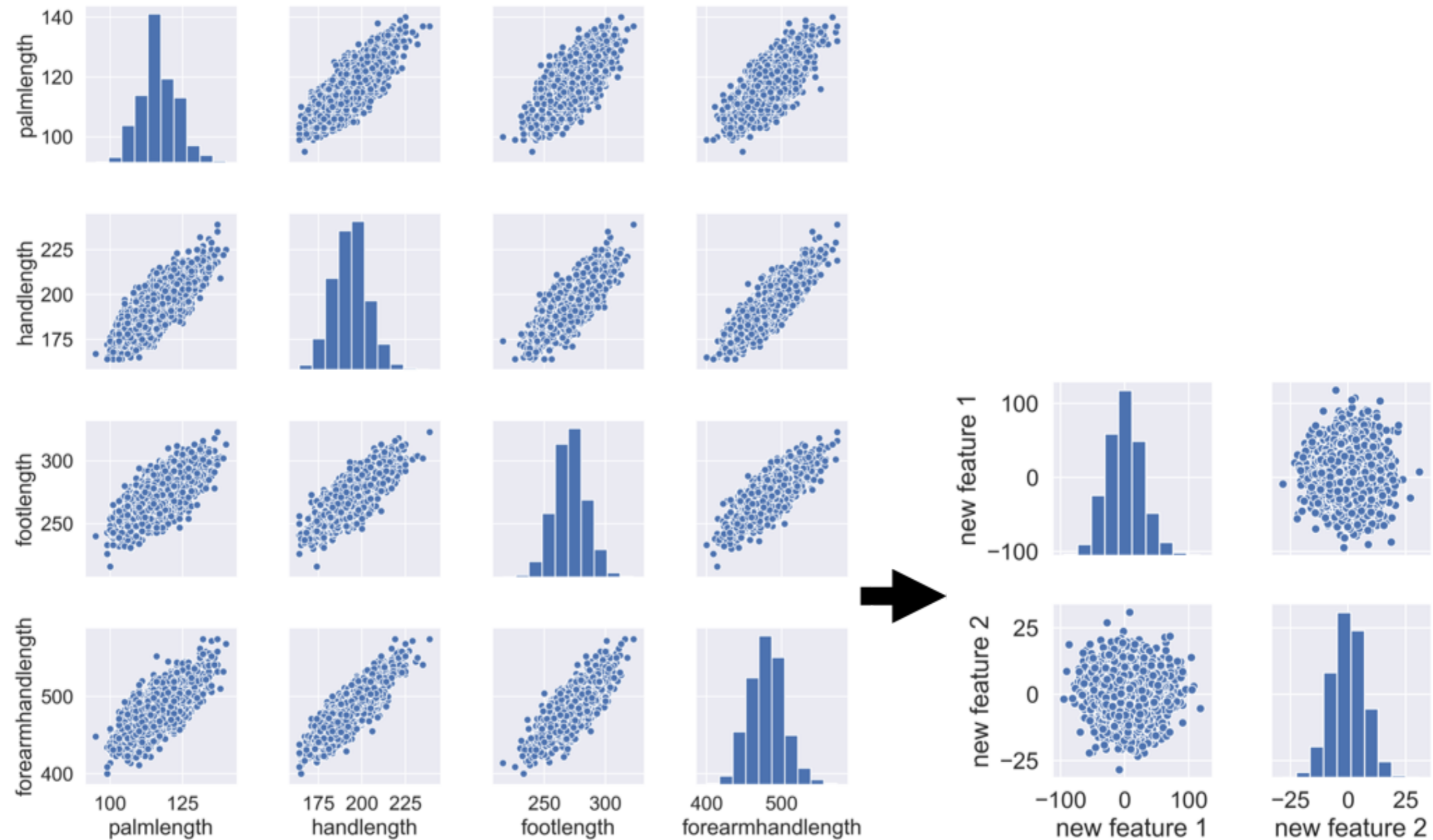
# Feature extraction



# Feature extraction - Example



# Feature extraction - Example



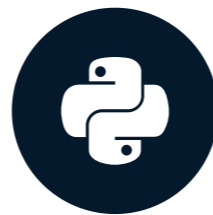


# Let's practice!

DIMENSIONALITY REDUCTION IN PYTHON

# t-SNE visualization of high-dimensional data

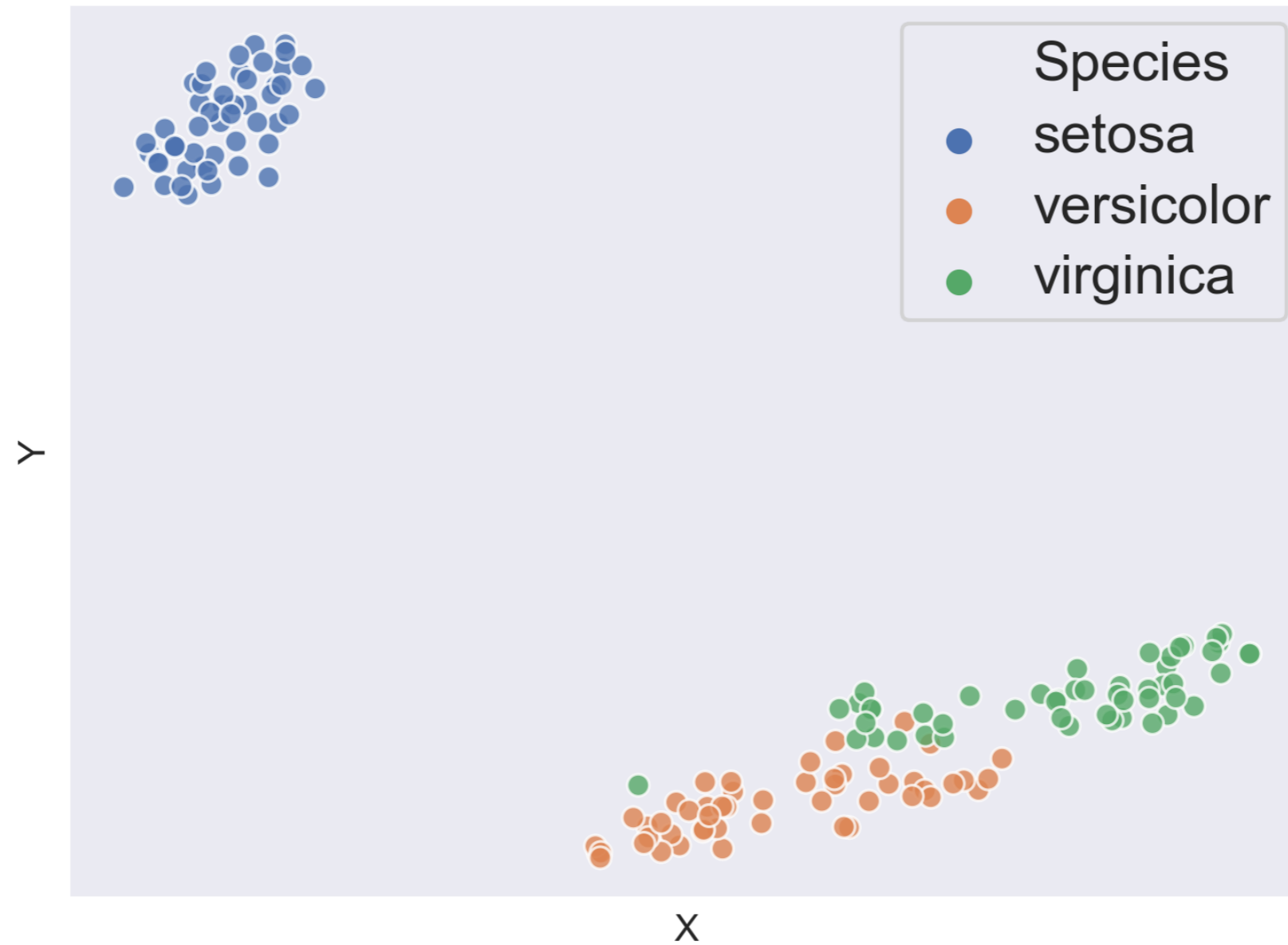
DIMENSIONALITY REDUCTION IN PYTHON



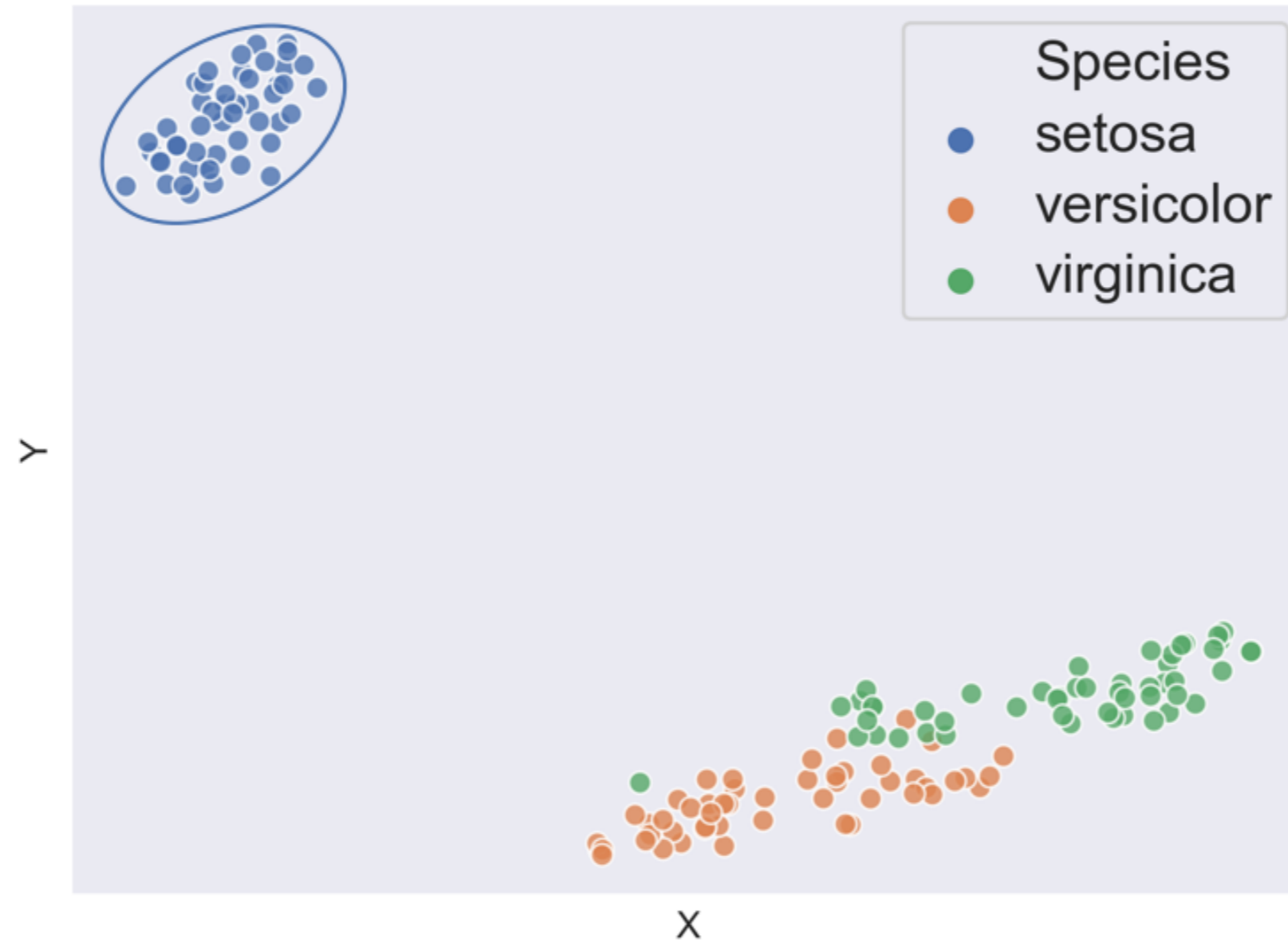
**Jeroen Boeye**

Head of Machine Learning, Faktion

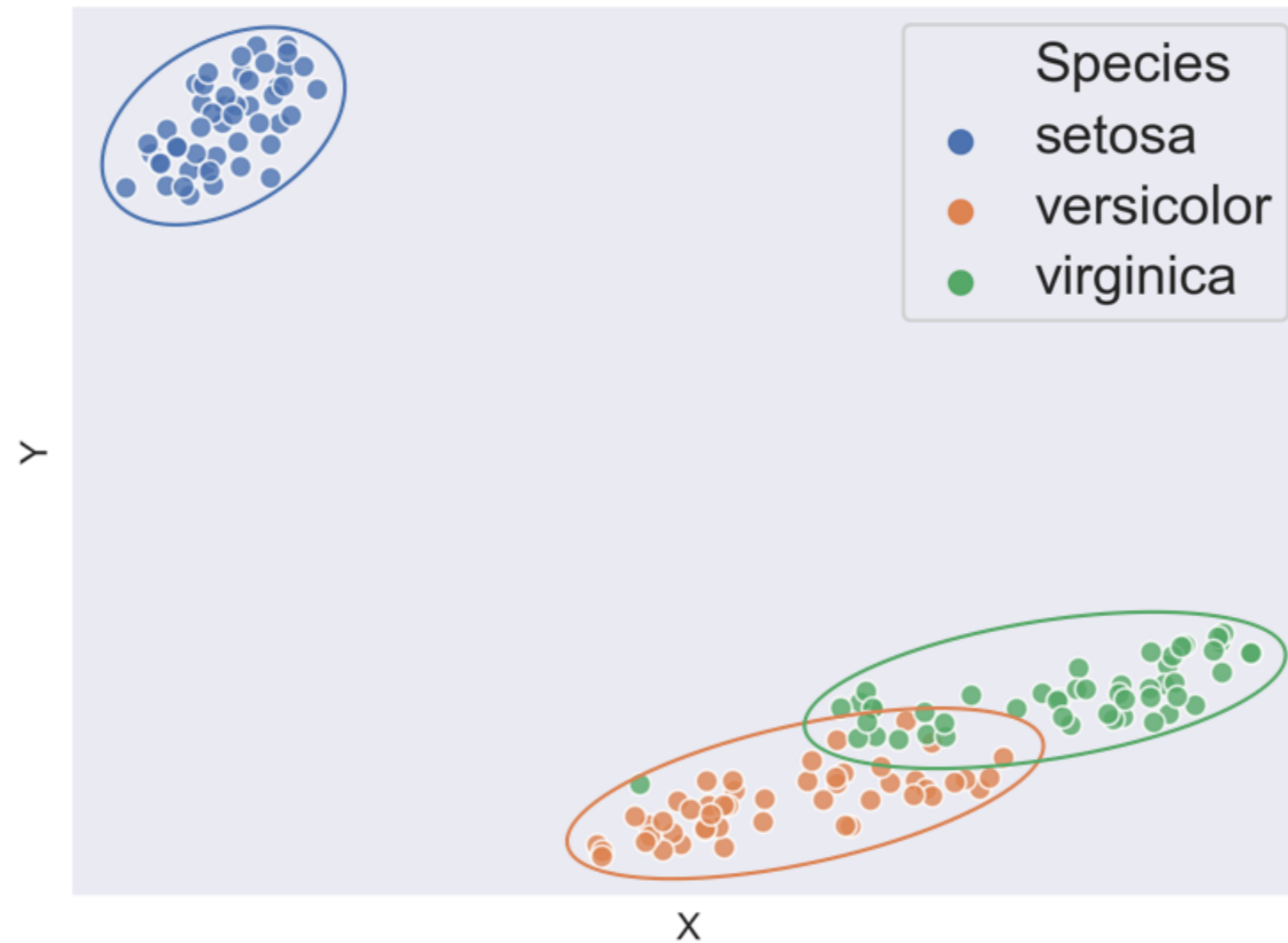
# t-SNE on IRIS dataset



# t-SNE on IRIS dataset



# t-SNE on IRIS dataset



# t-SNE on female ANSUR dataset

```
df.shape
```

```
(1986, 99)
```

```
non_numeric = ['BMI_class', 'Height_class',  
               'Gender', 'Component', 'Branch']
```

```
df_numeric = df.drop(non_numeric, axis=1)
```

```
df_numeric.shape
```

```
(1986, 94)
```

# Fitting t-SNE

```
from sklearn.manifold import TSNE
```

```
m = TSNE(learning_rate=50)
```

```
tsne_features = m.fit_transform(df_numeric)
```

```
tsne_features[1:4, :]
```

```
array([[ -37.962185,  15.066088],  
       [ -21.873512,  26.334448],  
       [  13.97476 ,  22.590828]], dtype=float32)
```

# Assigning t-SNE features to our dataset

```
tsne_features[1:4, :]
```

```
array([[ -37.962185,  15.066088],  
       [ -21.873512,  26.334448],  
       [  13.97476 ,  22.590828]], dtype=float32)
```

```
df['x'] = tsne_features[:,0]
```

```
df['y'] = tsne_features[:,1]
```



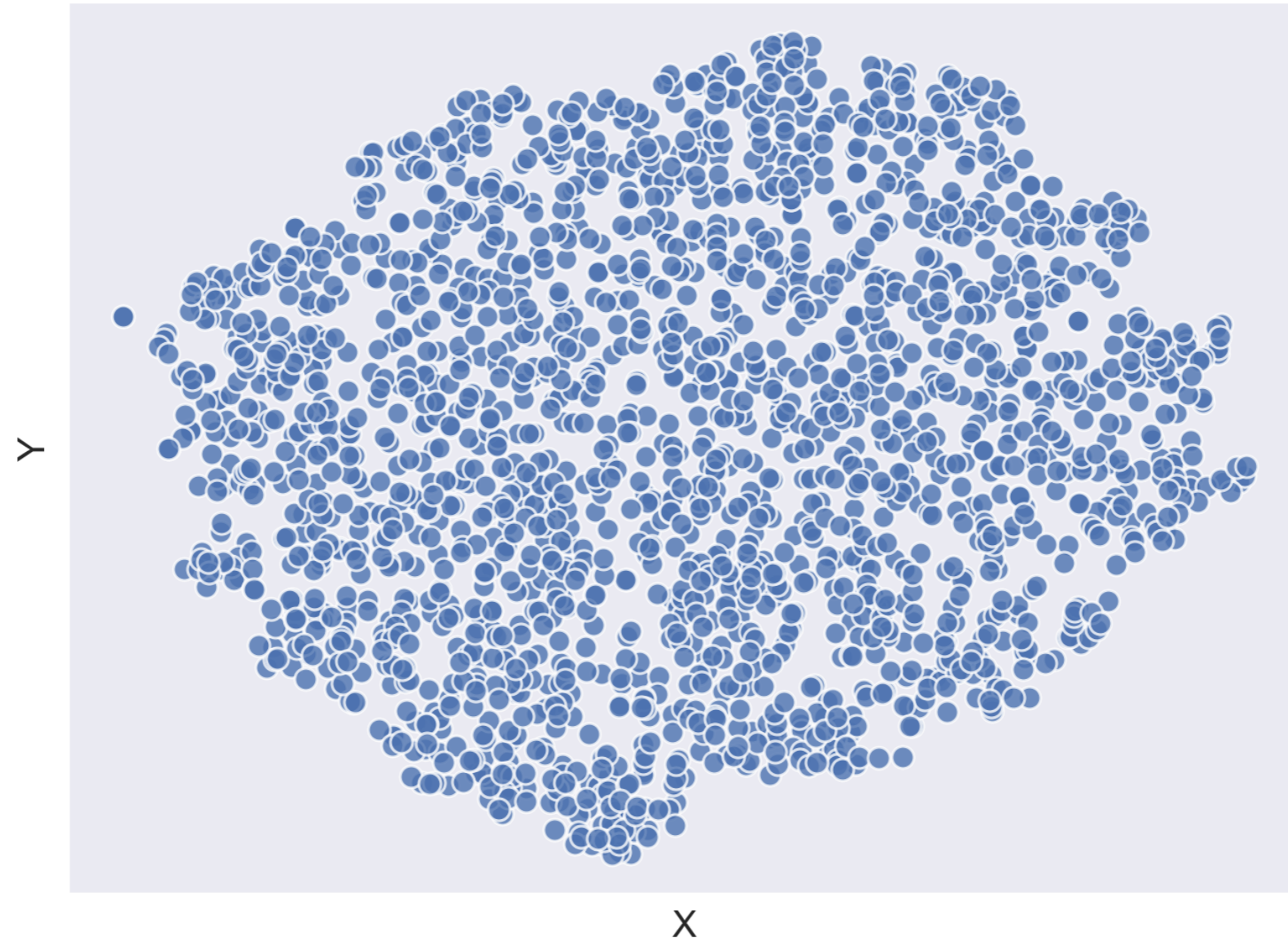
# Plotting t-SNE

```
import seaborn as sns
```

```
sns.scatterplot(x="x", y="y", data=df)
```

```
plt.show()
```

# Plotting t-SNE



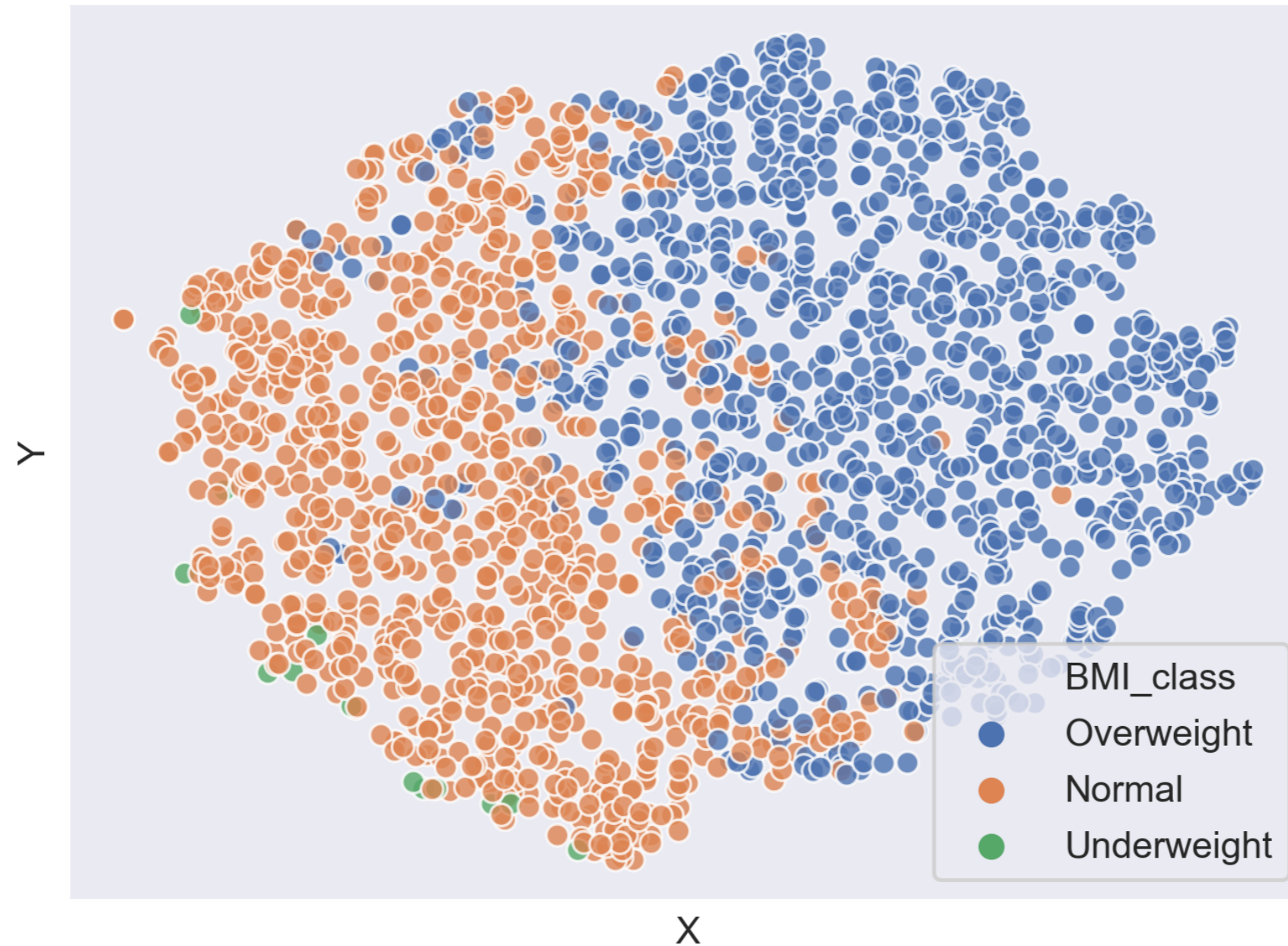
# Coloring points according to BMI category

```
import seaborn as sns
import matplotlib.pyplot as plt

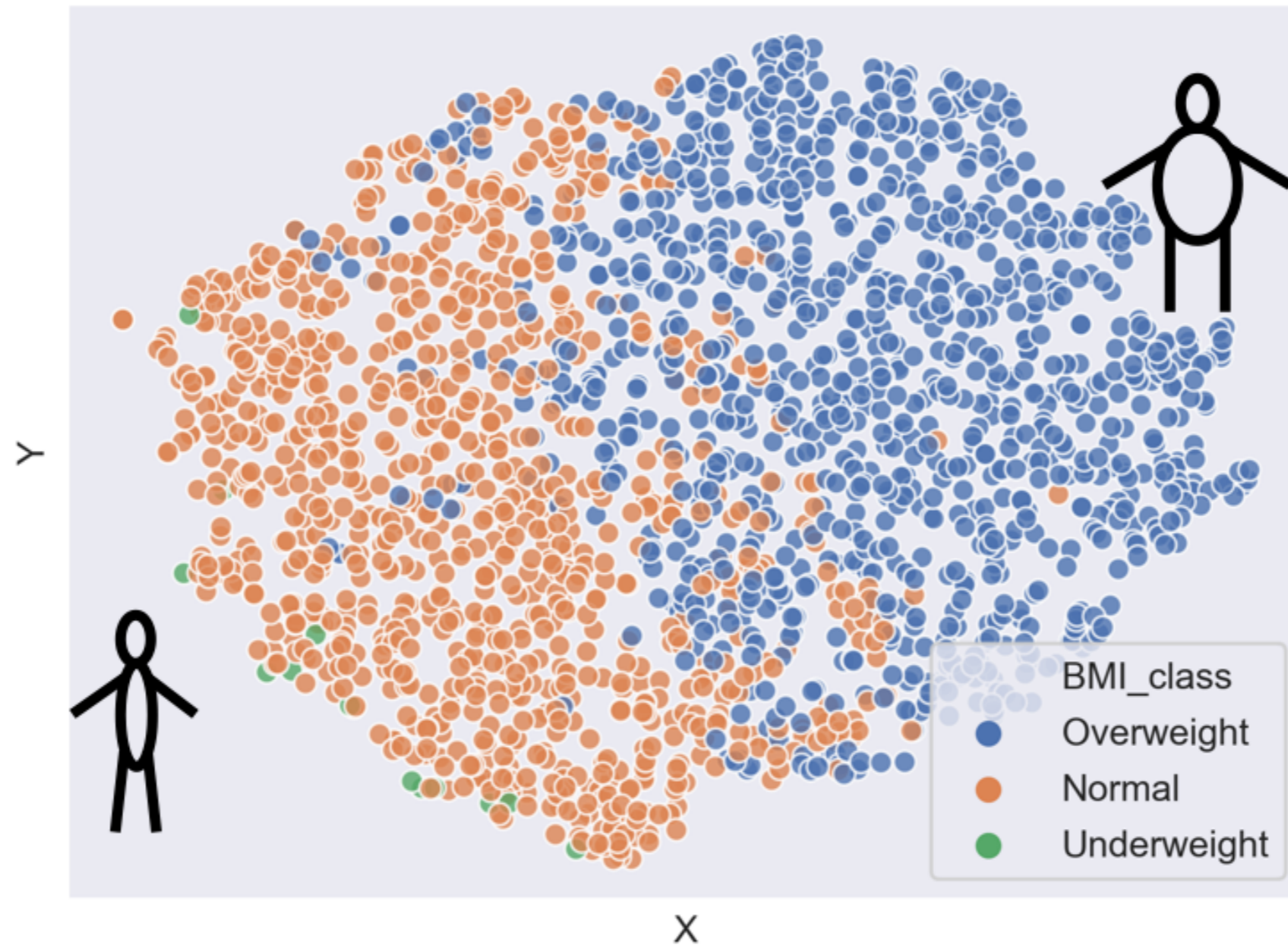
sns.scatterplot(x="x", y="y", hue='BMI_class', data=df)

plt.show()
```

# Coloring points according to BMI category



# Coloring points according to BMI category



# Coloring points according to height category

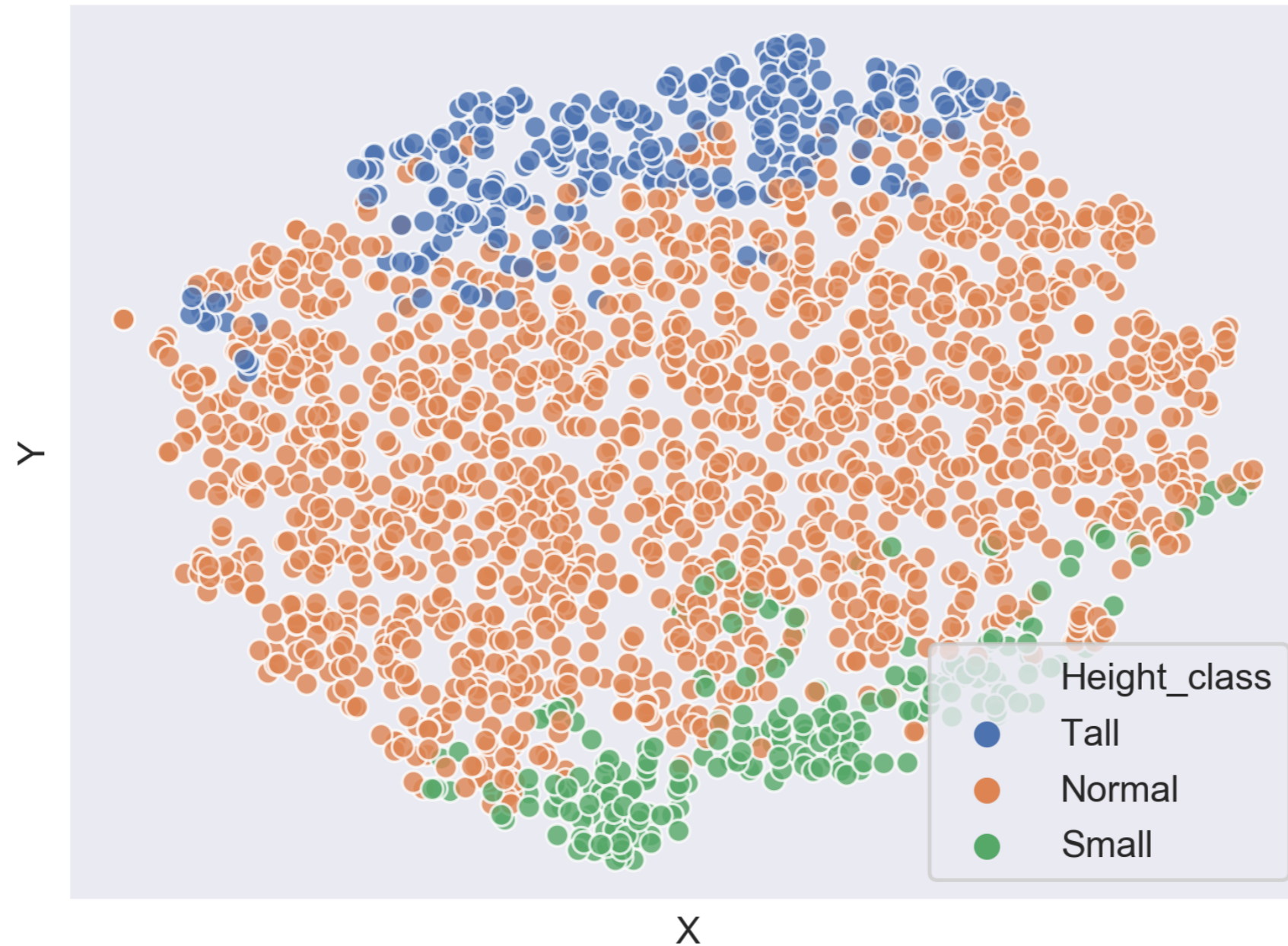
```
import seaborn as sns

import matplotlib.pyplot as plt

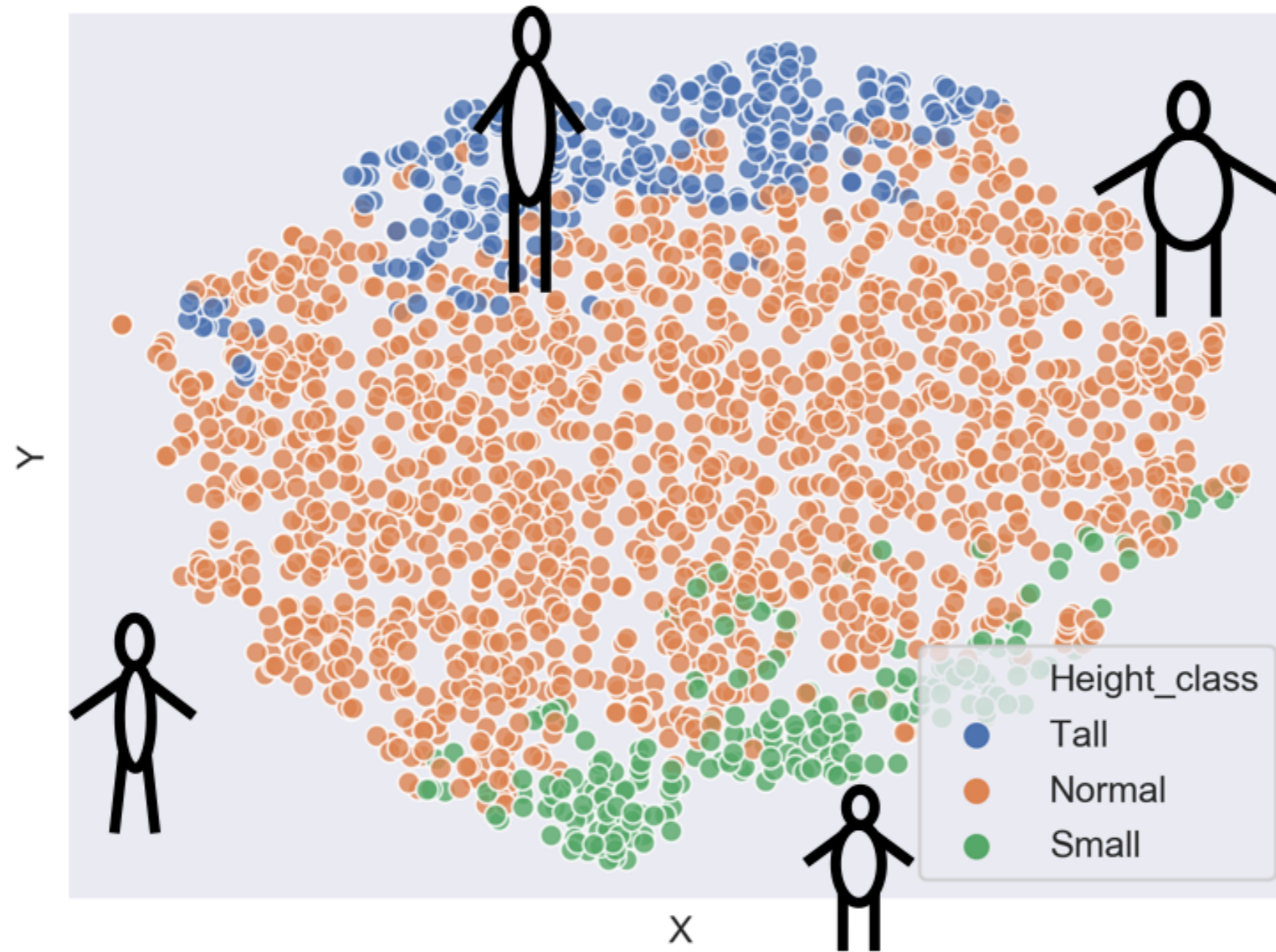
sns.scatterplot(x="x", y="y", hue='Height_class', data=df)

plt.show()
```

# Coloring points according to height category



# Coloring points according to height category





# Let's practice!

DIMENSIONALITY REDUCTION IN PYTHON